



CLOSE UP



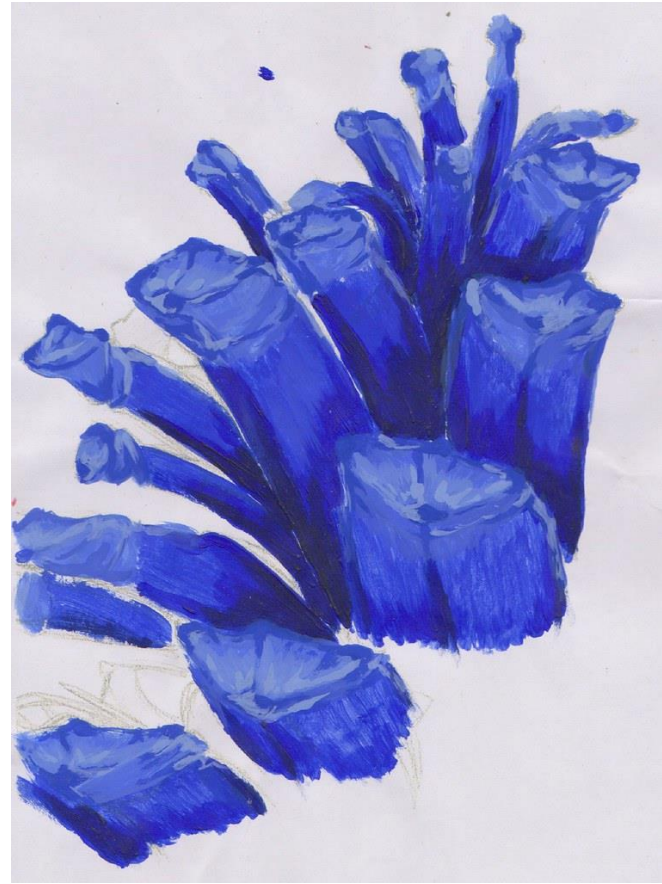
Sometimes a close-up look at something can reveal some interesting artistic Potential....









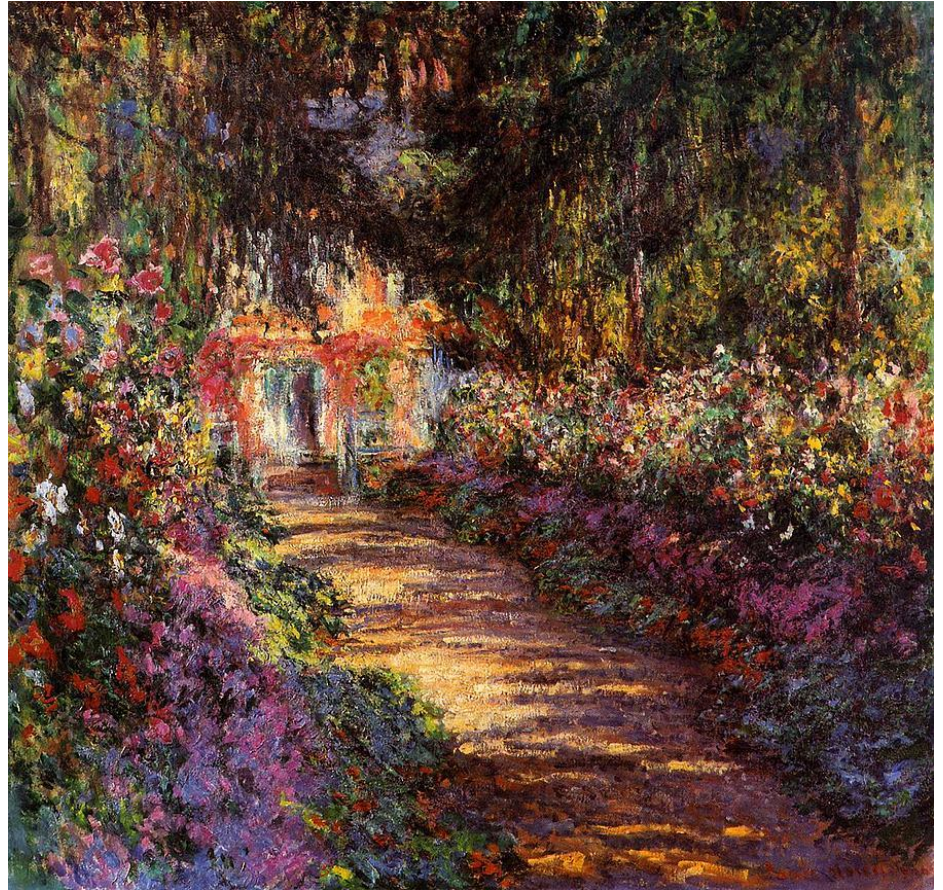




Claude Monet (1840-1926)
was a French artist.
He was also keen on his
garden that had some ponds
where he grew water lilies.

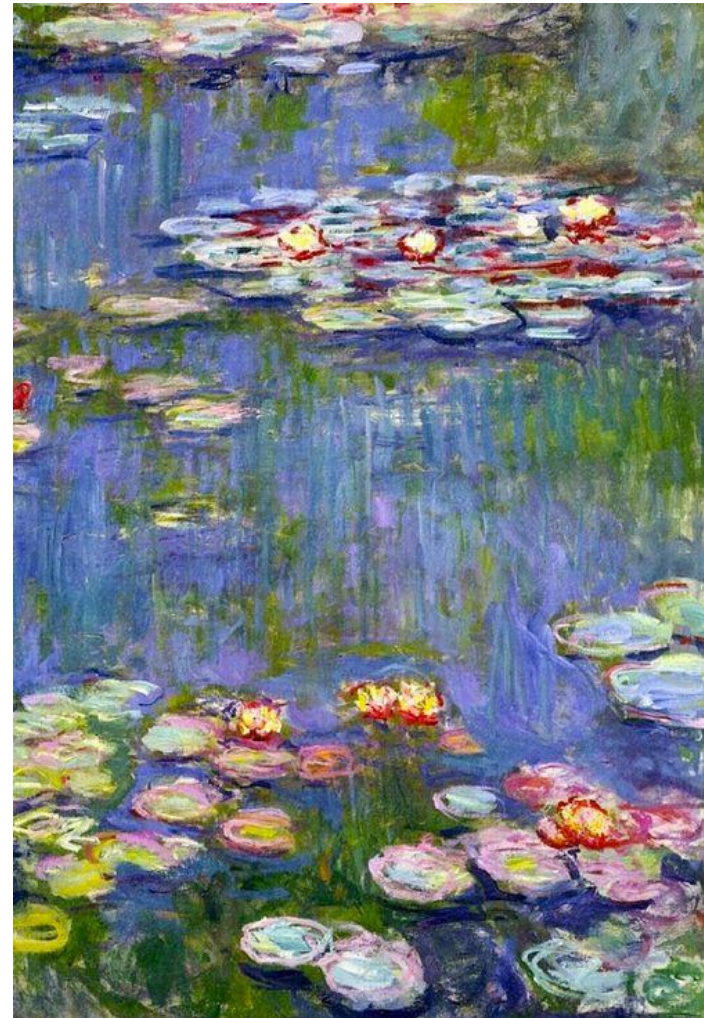


The paintings depict his flower garden at his home in Giverny, and were the main focus of his artistic production during the last thirty years of his life. Many of the works were painted while Monet suffered from cataracts.

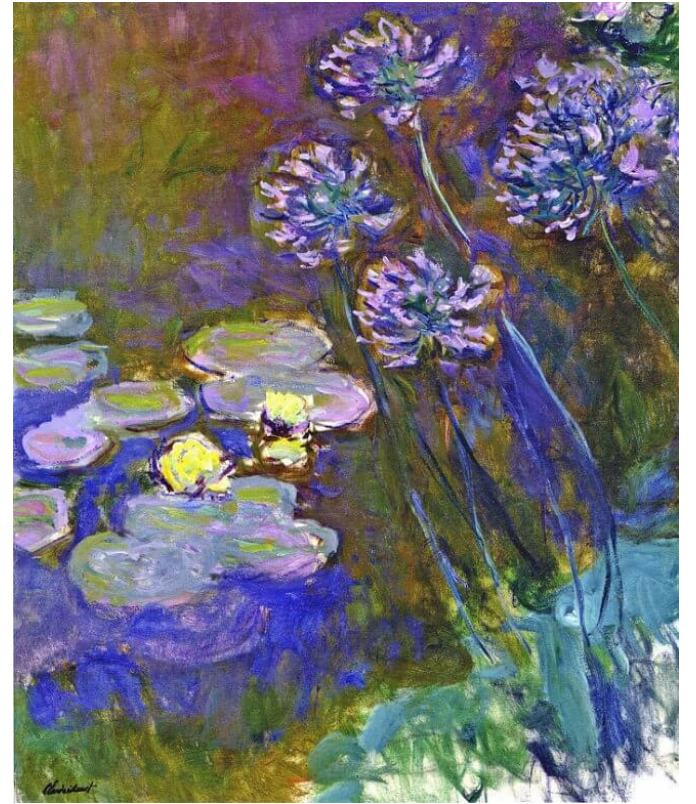


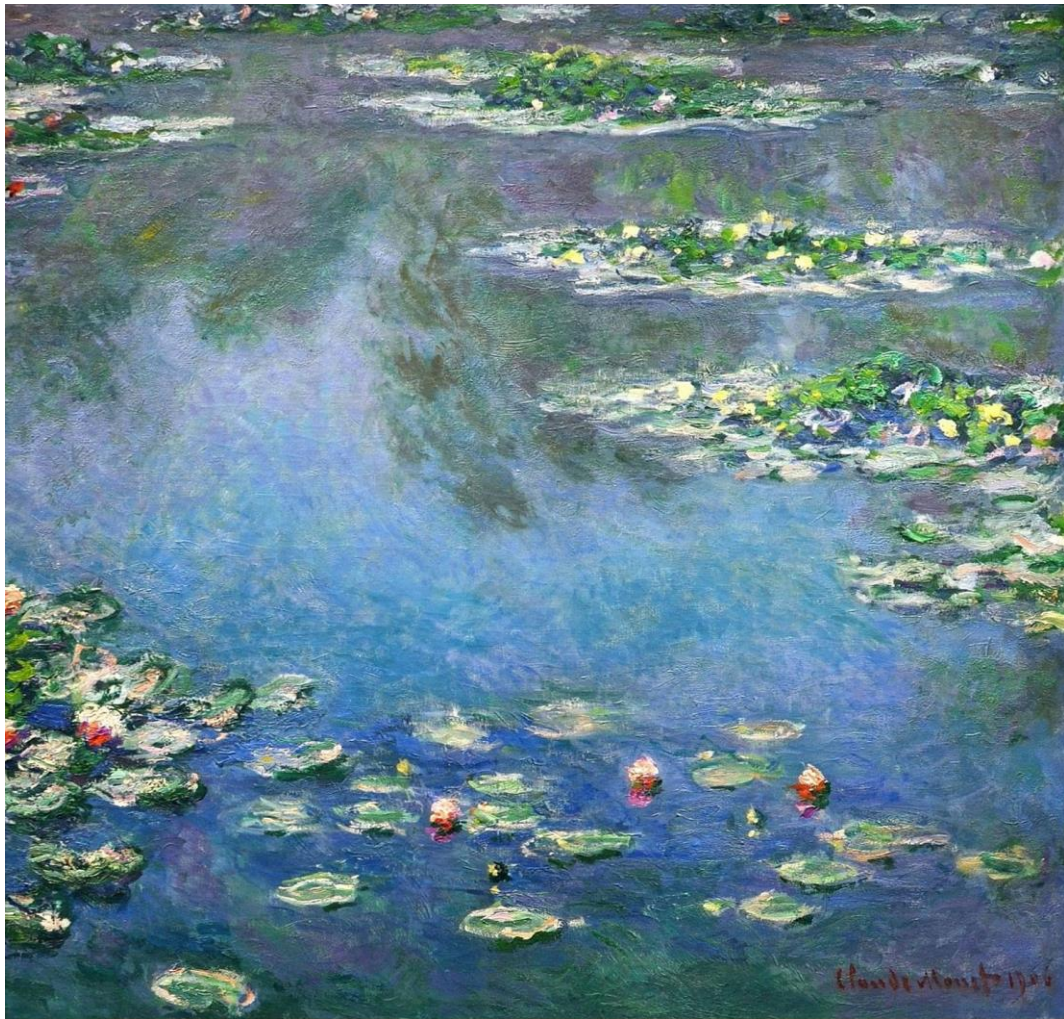
Claude Monet was a French artist.
He was also keen on his garden that
had come ponds where he grew water
lilies.
He used to paint scenes in his garden.

But his best known paintings are
from when he focused on his water
lilies









<https://www.youtube.com/watch?v=XeApLWd7240>

Monet in the morning
Monet in the evening
Monet at supper time
If you paint like Monet
You'll paint most all the time
Flowers in the garden
Boats in the water
Haystacks in sunshine
If you paint like Monet
Your art will be just fine.

In Giverney
That's where he goes
His pond and bridge
Where lilies grow
Flowers and trees
Are all around
And buildings in
The busy town.

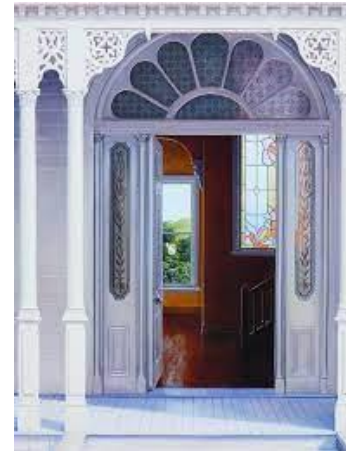
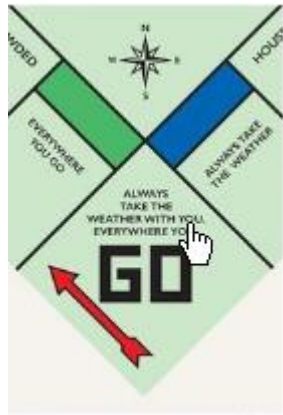




Glenn Jones



Peter Siddell



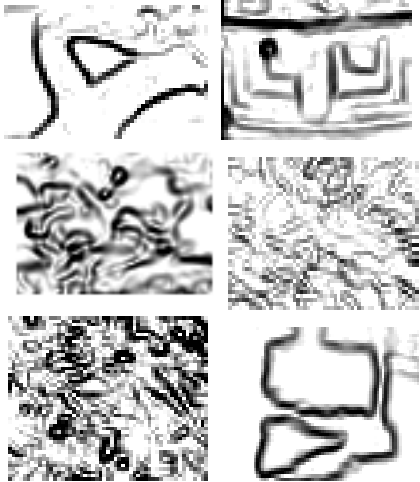
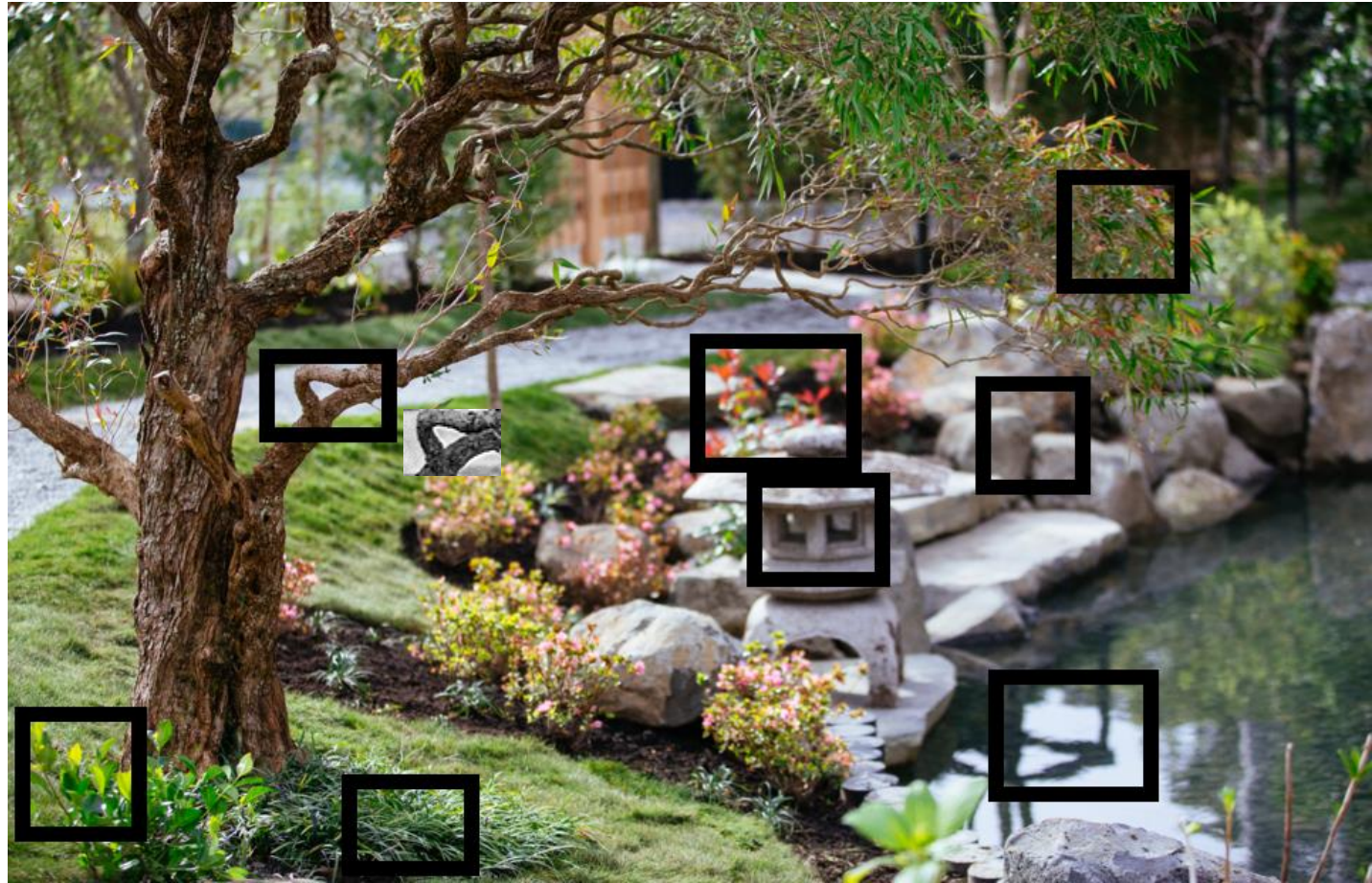
Today you will use two L shaped pieces of card and put them together to make a rectangular (or square) Close Up viewer.



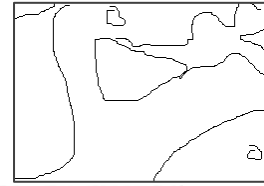
Use your viewer to explore a photograph of a garden. (There are many to choose from.)



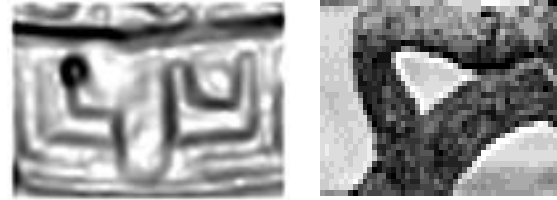
Explore your
photograph and
find FOUR
(or more up to 9)
interesting close
up views.



Explore your photograph and four or more interesting close up views. Start by drawing the lines only



Chose some to finish with black and white shading...



Choose some to complete with coloured pencils...



Take one of these to enlarge as a painting...
(or if you prefer, use oil pastels or crayons for your coloured version.)

