

Audubon

ornithology



Born: Jean-Jacques Rabin

April 26, 1785 (Haiti)

Died : January 27, 1851 (aged 65)

Manhattan, New York, U.S.

Occupation

Naturalist, painter, ornithologist





From the drawing of J. Audubon, F. R. S., & L. S.

Engraved, colored, and collated by S. Searl, 1828.

Roseate Spoonbill
PLATA LEA. AD. & J. A. L.
— 1828. —



American Bittern
ARDEA HIBOL

PLATE XXX

PLATE XXX







Passenger Pigeon
COLUMBA MIGRATORIA, Linn.
Male, 1. Female, 2.



Louisiana Heron. ARDEA LUDOVICIANA. W. Male adult.



Blue Jay.
CORYVUS CRISTATUS.
Male, 1. Female, 2, 3.

Drawn from nature by J.J. Audubon F.R.S. & F.L.S.

Engraved, printed & Coloured by R. Swain, 1827





Meleagris gallopavo Wild Turkey - *Straggelbalken*





From the Museum and Cabinet of the Academy of Sciences, St. Petersburg.

Alcedo Alutor
ALCEDO ALUTOR.

fine art





Drawn from Nature by J. A. Audubon, F.R.S., F.L.S.

Engraved, Coloured, & Printed by R. Smith, London, 1815.

Arctic Tern.
STERNA ARCTICA.



Drawn from Nature and Published by J. Van der Aarde, 1851, U.S.

Blue Crane, or Koon.
ALCEDO CORUANA.
L. 1841. Birds spring plumage. 2. Young second Year.

Engraved, Printed & Coloured by W. H. Barre, 1850.

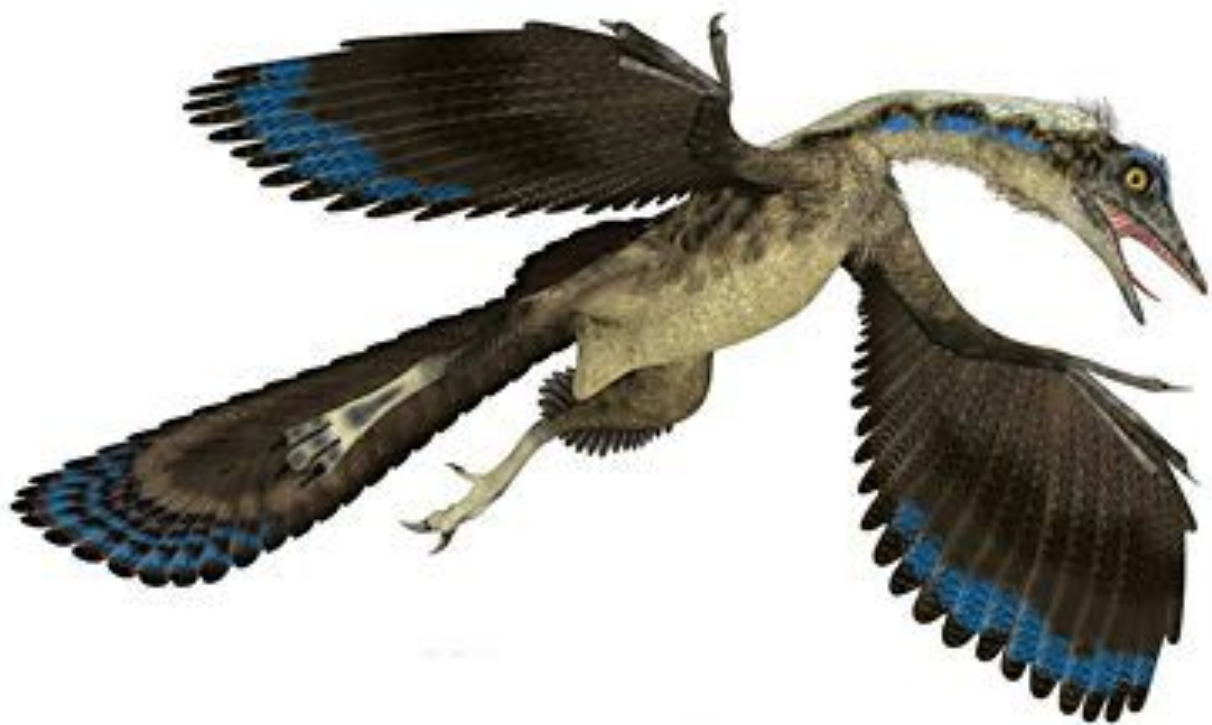




Willow Grouse or Large Ptarmigan.

TETRAO PALIFEX, Temm.

Male, 1. Female, 2. & Young.
Siberian Forest, Nov. 1850.





From the Museum of the Smithsonian Institution, U.S.A.

Scarlet Ibis
IBIS, SCARLET, A. Vieillot
1. Adult Male. 2. Young Female Adult.

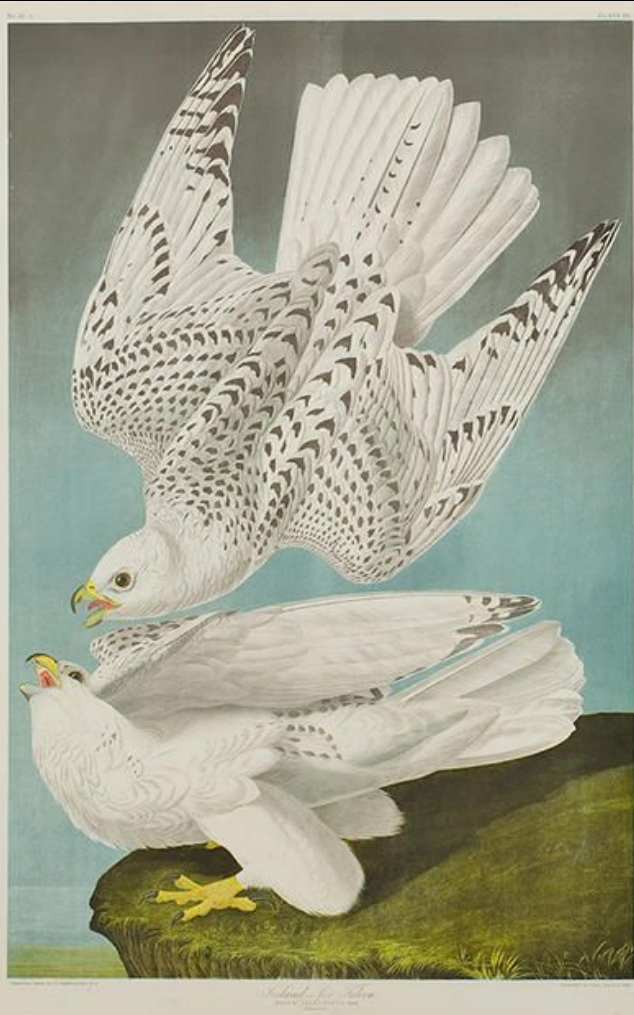
Engelbert Kaibitz and Heinrich Vogt (1801)



Mallard Duck. ANAS BOSCHUANI. LINNÆUS.



Purple Finch
FRINGILLA PURPUREA, Amer.
Male, ♀ Female, ♀
*Red Hawk - *Larus americanus*.*



White-tailed Eagle
Haliaeetus albicollis

RAYMOND CHING

Raymond Ching, is a New Zealand painter.

Ching is known for his contemporary bird and wildlife paintings, and for his **ornithological** illustrations in books like The Reader's Digest Book of British Birds.

[Wikipedia](#)

Born: 1939 (age 82 years), Wellington



New Zealand pigeon
Wainiphaea porphyrio

subspecies (Chathamianus)
Chatham Is.

Norfolk Is. (spadicea)
Petrel C. 1866



roughly done





Strangely, Weka and Kotia set off together, at dusk.



*FLYING
WEKA*



RAY CHING



