



Klee

LE GRAND GALERIE
60 RUE DE L'UNIVERSITÉ - PARIS VII
MAI A JUILLET 1955

Paul Klee (18 December 1879 – 29 June 1940)

was a Swiss-born German artist.

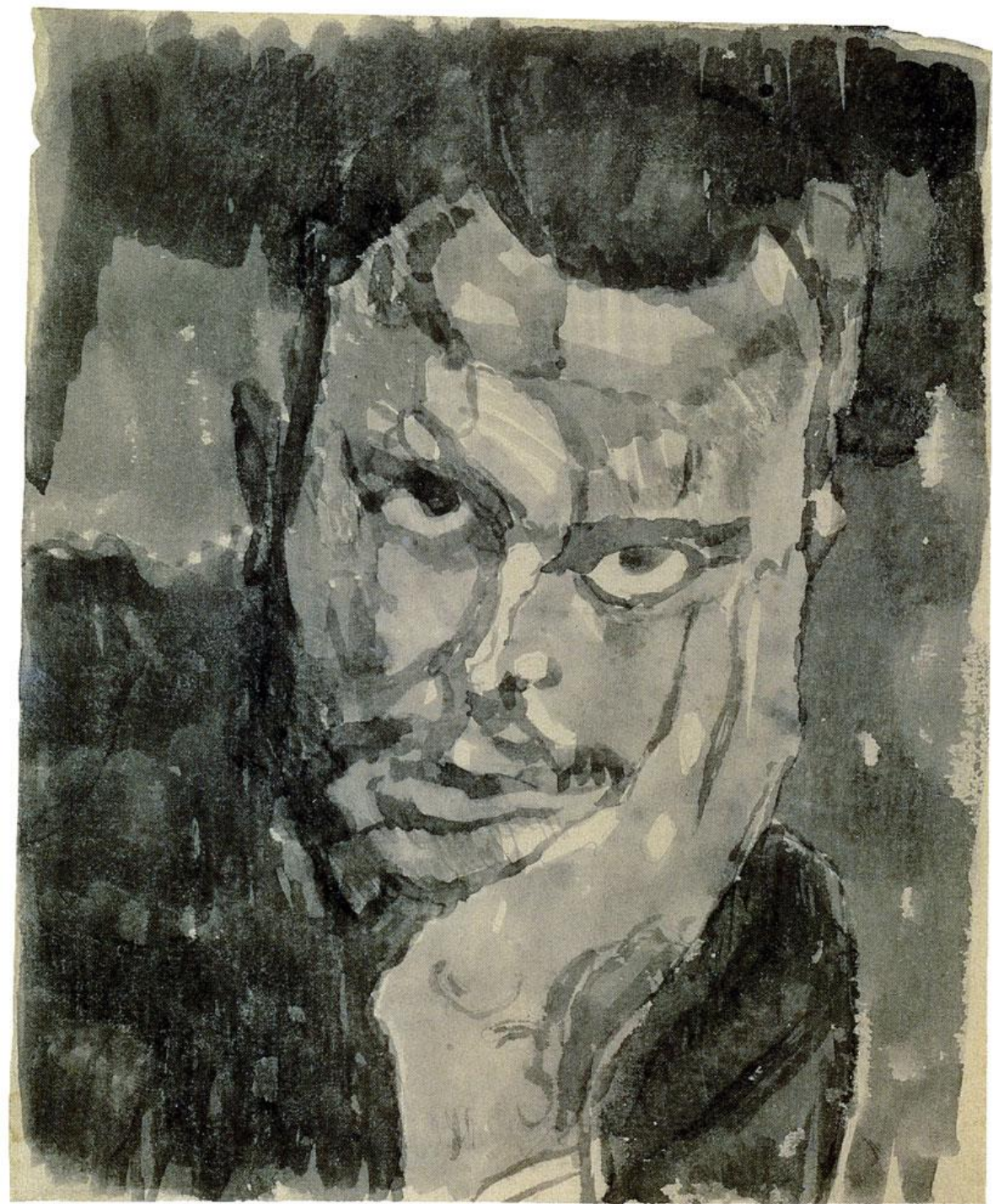
His highly individual style was influenced by movements in art that included expressionism, cubism, and surrealism.

Klee was a natural draftsman who experimented with and eventually deeply explored color theory, writing about it extensively. “The Paul Klee Notebooks”, are held to be as important for modern art as Leonardo da Vinci’s “A Treatise on Painting” was for the Renaissance.

He and his colleague, Russian painter Wassily Kandinsky, both taught at the Bauhaus school of art, design and architecture in Germany.

His works reflect his dry humor and his sometimes childlike perspective, his personal moods and beliefs, and his musicality.







1898-1899

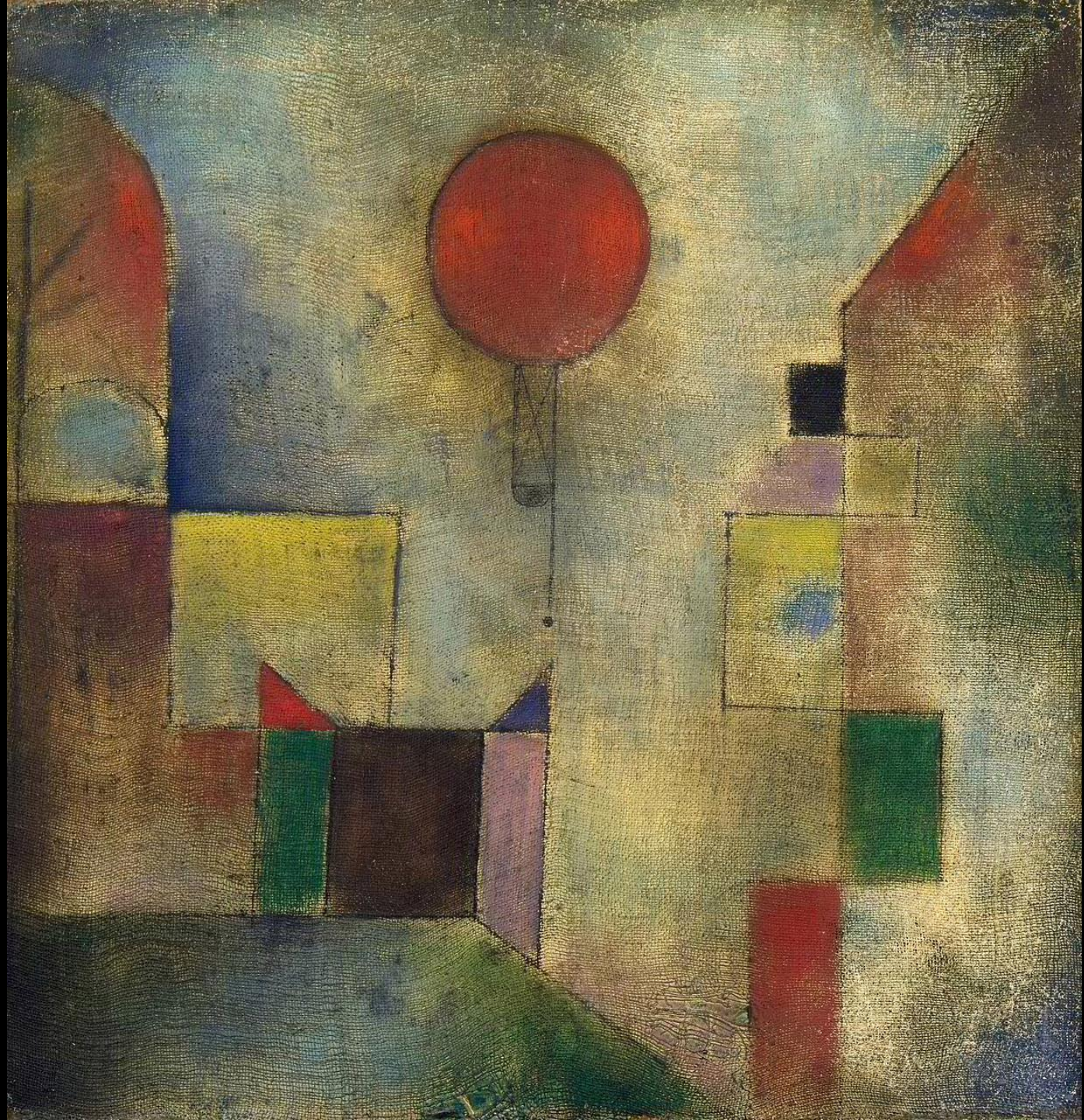
1898-1899



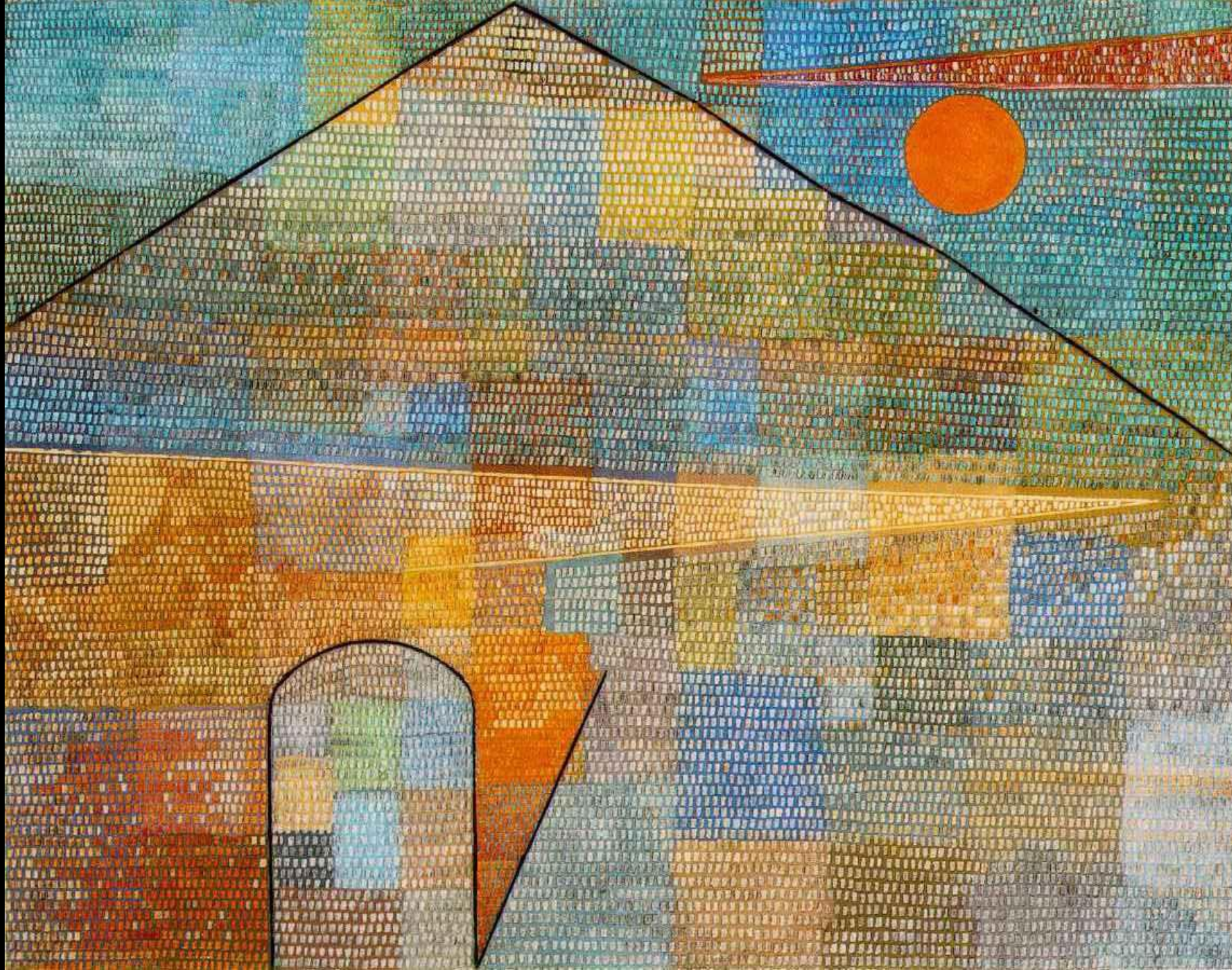


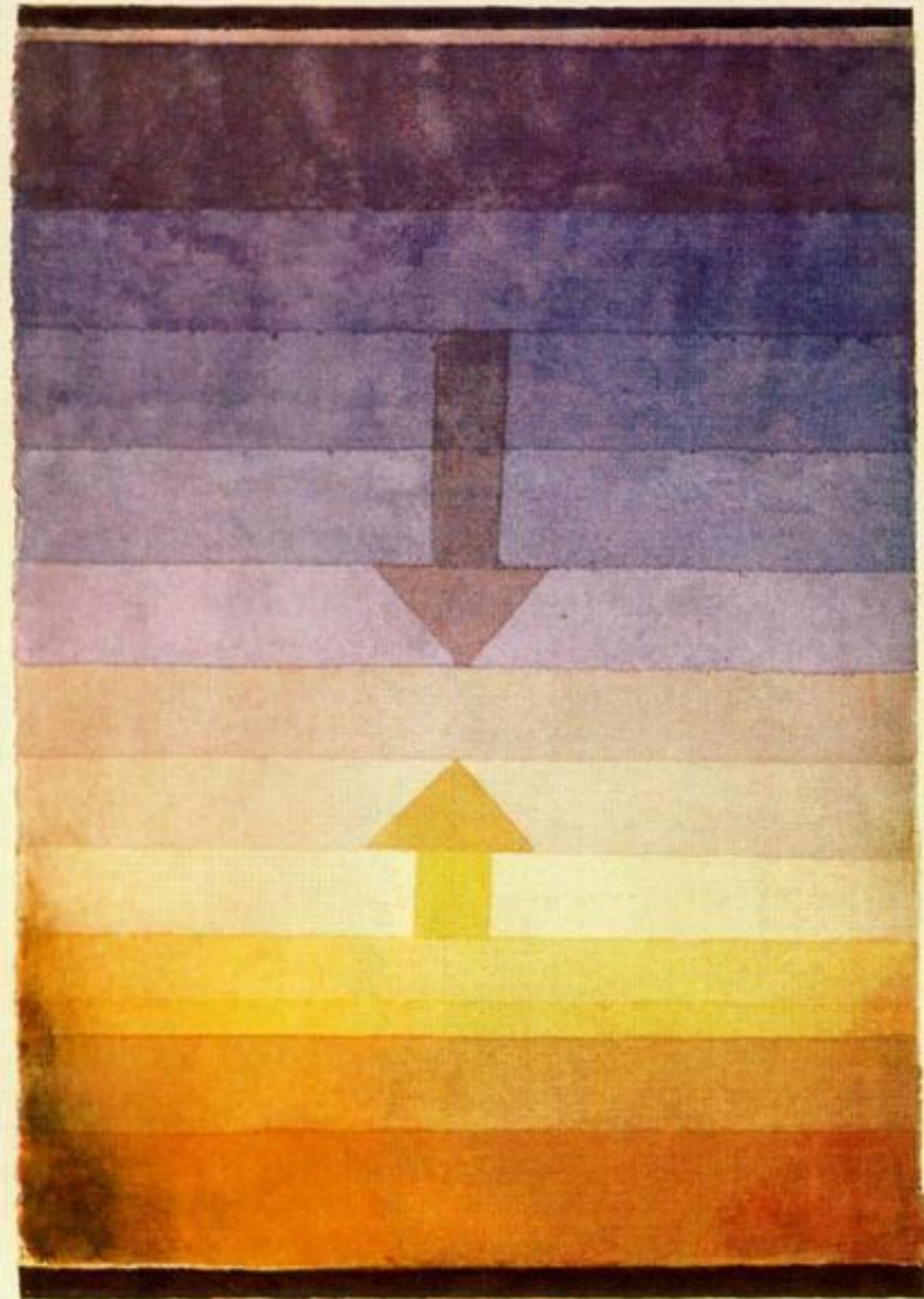
0 2000 1926 F3

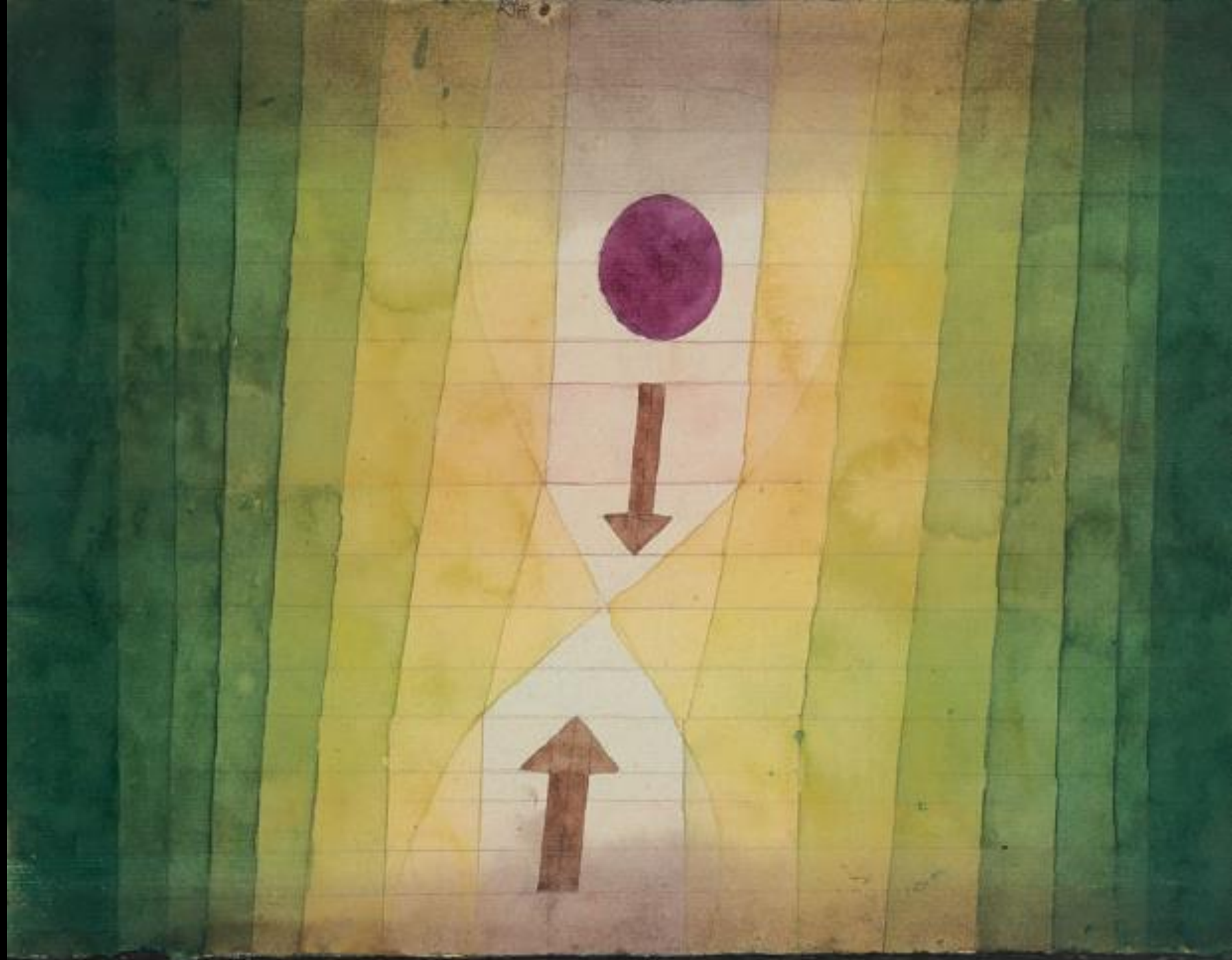








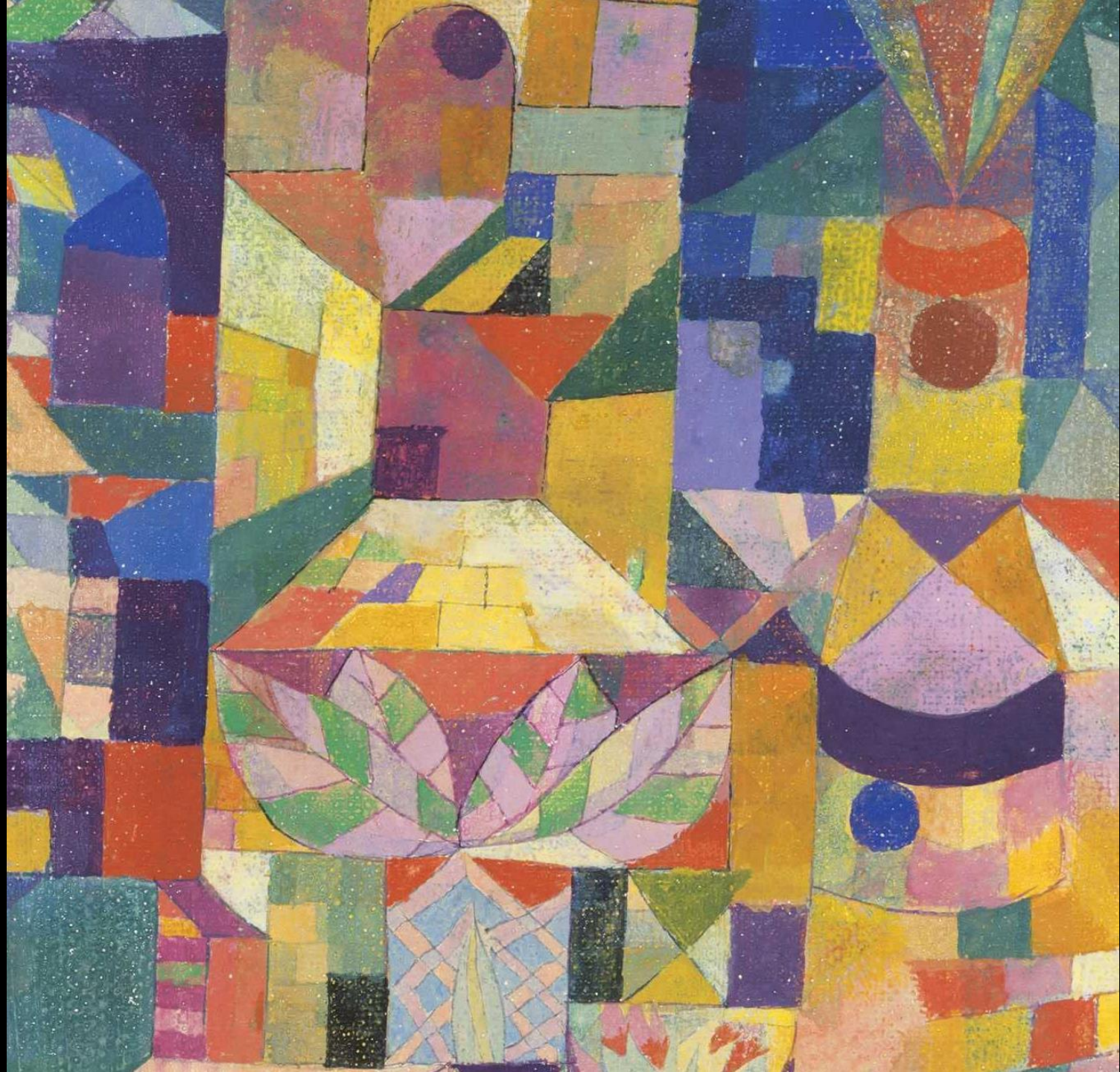






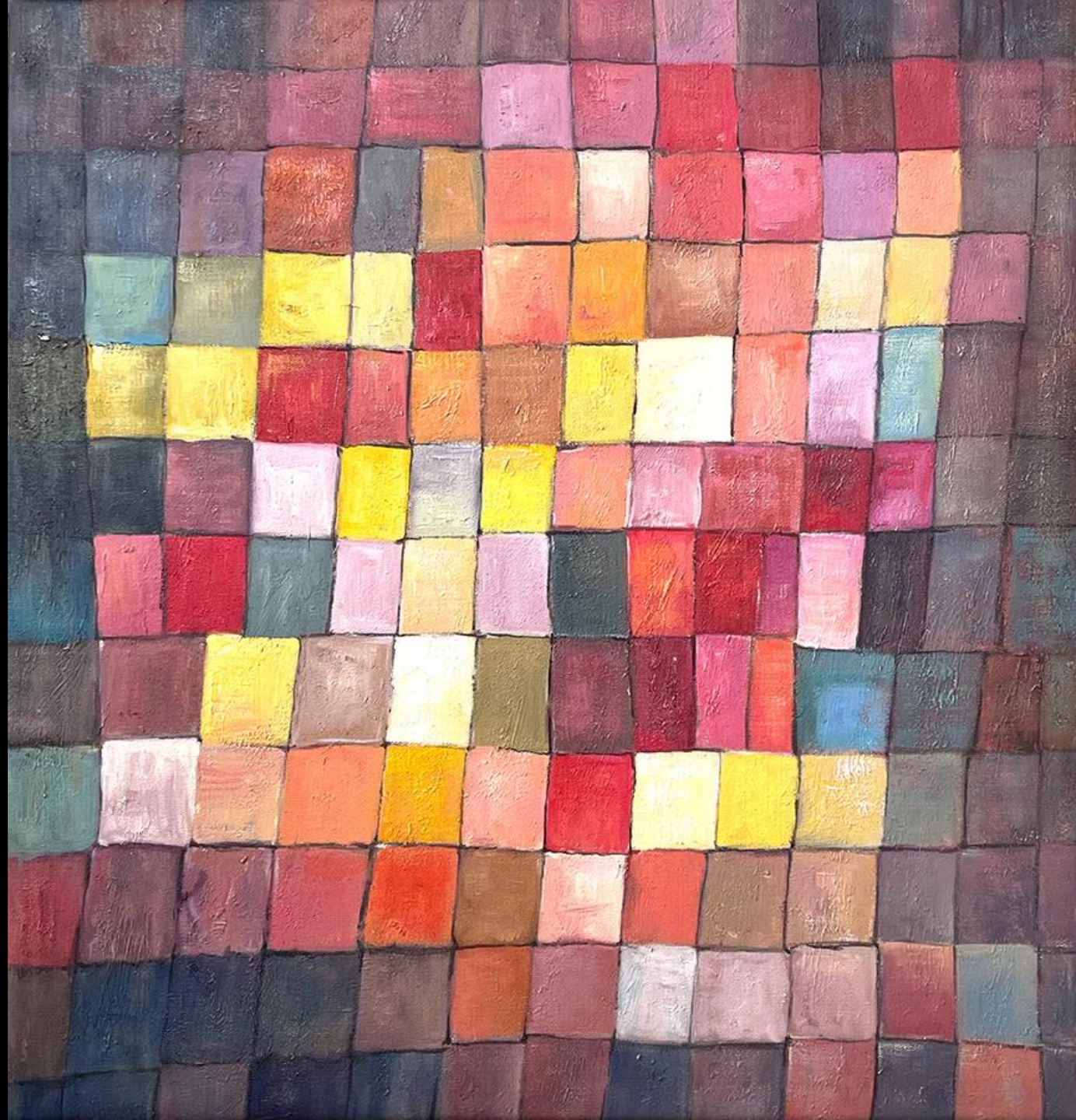
















1915 20

John G. Birch



